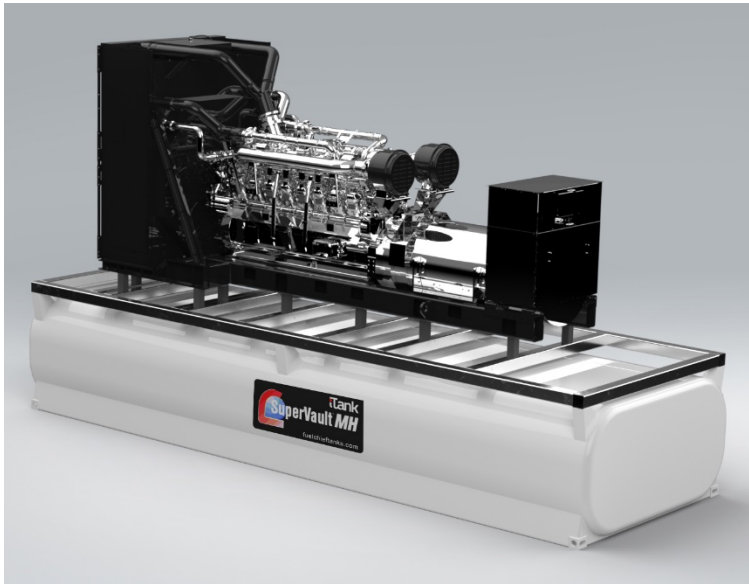


# Specification Sheet

Description ***Fuelchief SuperVault iTank - Genset Options***



The SuperVault iTank has been re-designed and certified as a rectangular 'obround' shape to cater for much tighter space requirements inside buildings resulting in the design of these rooms being much simpler, more cost effective and future-proof without the need to fire-rate the room.

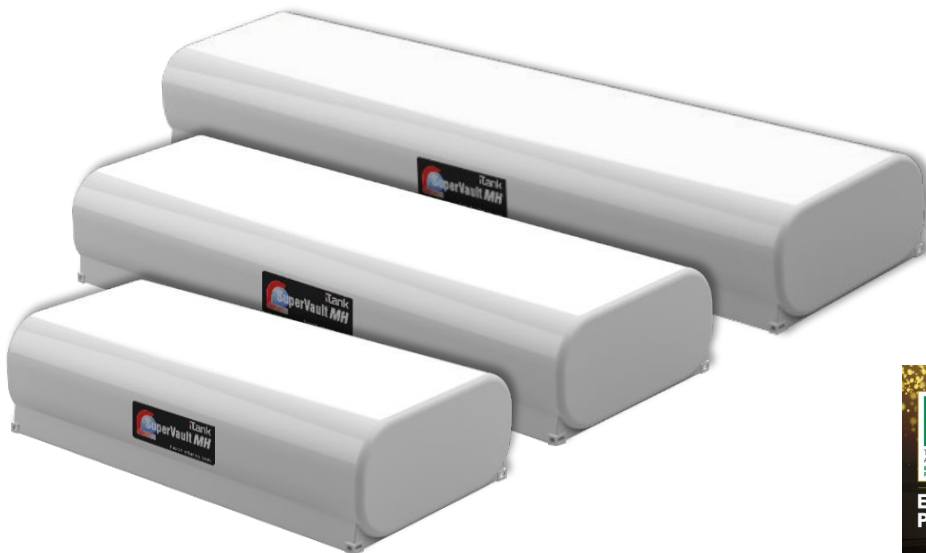
The SuperVault iTank can be legally placed closer to buildings and public/protected places; negating the requirement to build a fire rated room around the tank, saving construction time and cost; ease of installation and relocation.

## Summary of Benefits & Features

This precision engineered fuel tank is 4-hour fire-rated and is recommended due to its multi-hazard certification for commercial sectors. The SuperVault tank offers elite fire-rated, bullet-proof, impact-resistant technology which makes it the safest and most durable tank in the world and can take the weight of the heaviest of generators

- 🔥 **Environmentally superior:** G300 mild steel twin shells, self-bunded protected tank
- 🔥 **Compliant:** with international tank approvals SwRI 95-03, SwRI 93-01, UL2085, UL142
- 🔥 **Multi Hazard Tested:** 4-hour fire exposure rating, hose-stream resistant, ballistics tested, heavy vehicle impact tested (FRL 240|240|240 as per AS1940)
- 🔥 **Ventilation:** emergency venting for primary and secondary containment
- 🔥 **Clean fuel:** superior thermal efficiency minimising evaporation and degradation of fuel quality
- 🔥 **Interstitial monitoring:** capability
- 🔥 **Maximum protection:** a 3-coat 15+ year industrial painting system for longevity
- 🔥 **Diversified material options:** material of construction may be carbon or stainless steel
- 🔥 **Easily transportable:** relatively light-weight and can be shipped anywhere in the world (empty).
- 🔥 **Seismic rating:** certified to Importance Level 4 as per AS1170
- 🔥 **Warranty:** 30 years

Model	Description	Capacity (litres)	Width (mm)	Length (mm)	Height (mm)
SViT 215-13,000	SuperVault iTank Base Tank	13000	2400	6060	1500
SViT 215-19,800	SuperVault iTank Base Tank	19800	2400	9100	1500
SViT 215-26,900	SuperVault iTank Base Tank	27000	2400	12160	1500
SViT 315-16,700	SuperVault iTank Base Tank	16700	3000	6060	1500
SViT 315-25,500	SuperVault iTank Base Tank	25500	3000	9100	1500
SViT 315-34,600	SuperVault iTank Base Tank	34600	3000	12160	1500
SViT 218-16,700	SuperVault iTank Base Tank	16700	2400	6060	1500
SViT 218-25,700	SuperVault iTank Base Tank	25700	2400	9100	1500
SViT 218-34,658	SuperVault iTank Base Tank	34600	2400	12160	1500
SViT 318-21,900	SuperVault iTank Base Tank	22000	3000	6060	1500
SViT 318-33,600	SuperVault iTank Base Tank	33600	3000	9100	1500
SViT 318-45,312	SuperVault iTank Base Tank	45300	3000	12160	1500
<b>Tank Design Standard</b>					
SwRI 95-03, SwRI 93-01, AS1940, AS1692, UL2085, UL142					



The Fuelchief SuperVault iTank has a series of uses and is part of the wider SuperVault range of tanks. This range includes the [Cylindrical Series](#), [Rectangular Series](#) and [Aviation Series](#). The SuperVault is the environmentally friendly choice when it comes to storing fuel in and around buildings and was shortlisted for this category at the Tank Storage Awards. Contact Fuelchief today for your more information.

